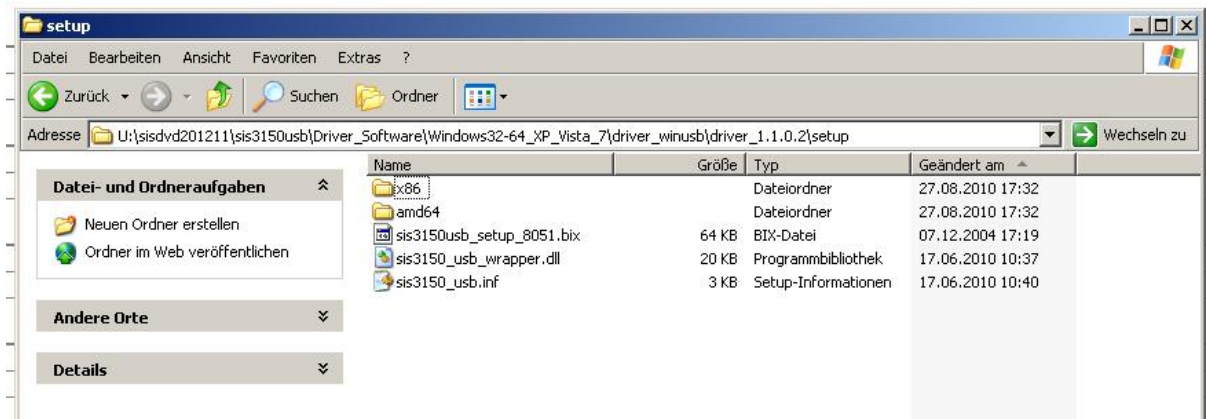


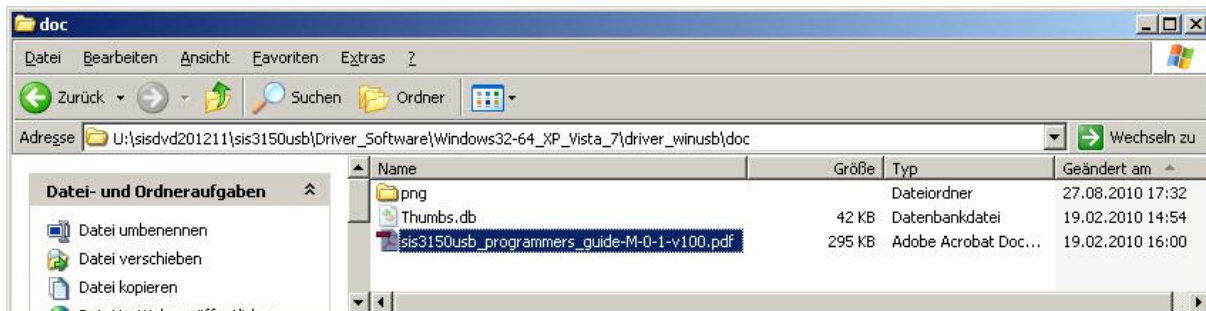
SIS3150USB/SIS3305 Getting Started for Osaka ILE

1. Installation of the driver for the SIS3150USB to VME interface

The location of the driver on the DVD is shown below.

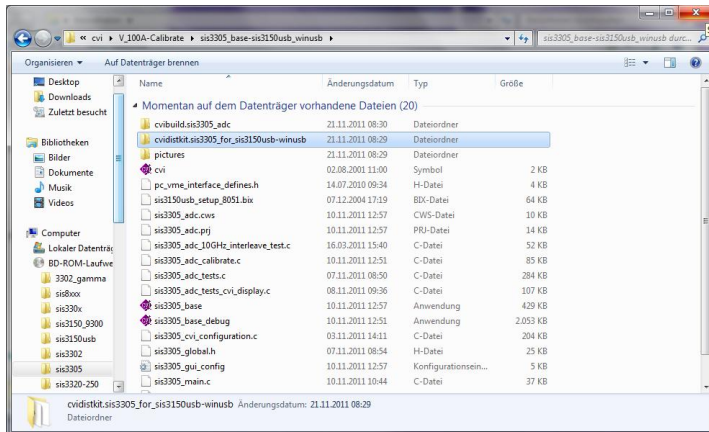


Documentation for the driver installation can be found in the sis3150usb_programmers_guide.

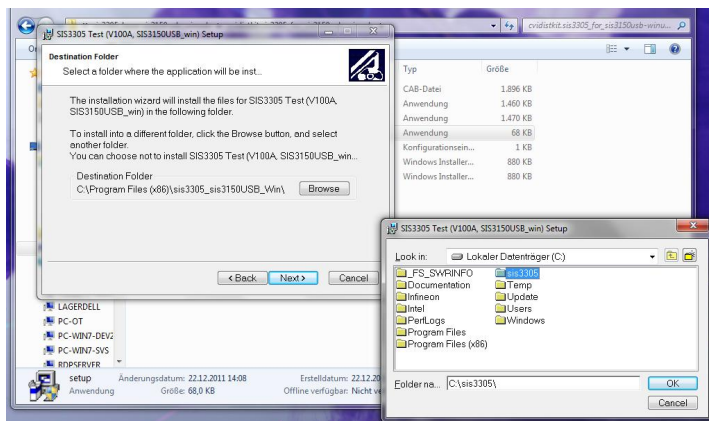


2. Installation of the CVI SIS3305 Base Program Distribution kit

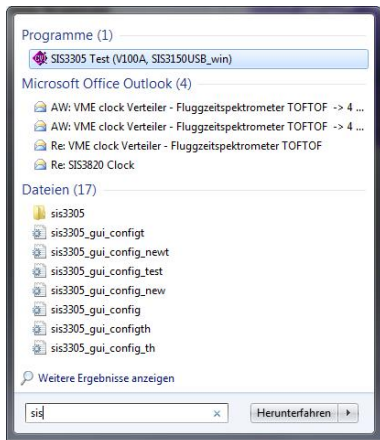
Install the SIS3305 base program by running the setup application in the cvidistkit directory of the V_100A-Calibrate directory



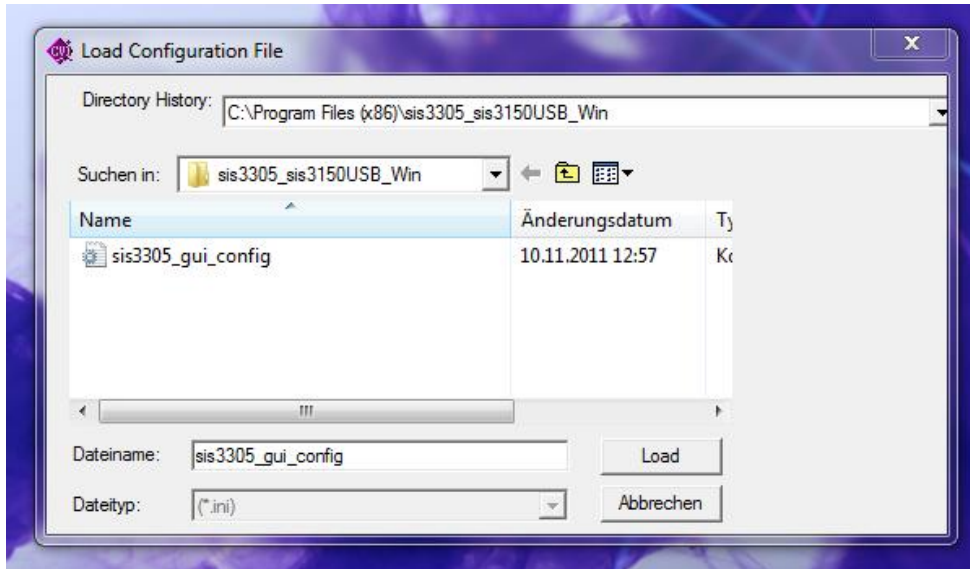
It is recommended to install the application in a top level directory like c:\sis3305 instead of the Program Files folder for read/write access permission reasons.



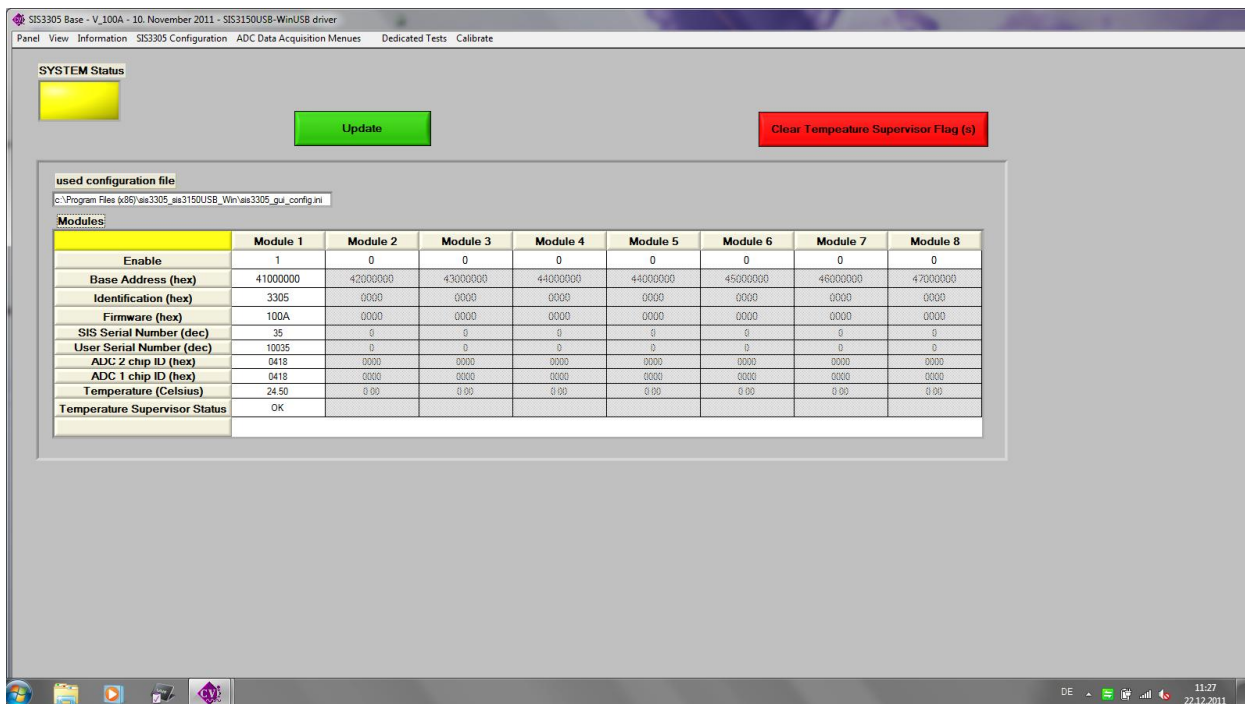
Start the SIS3305 Test (V100A, SIS3150USB_win) application



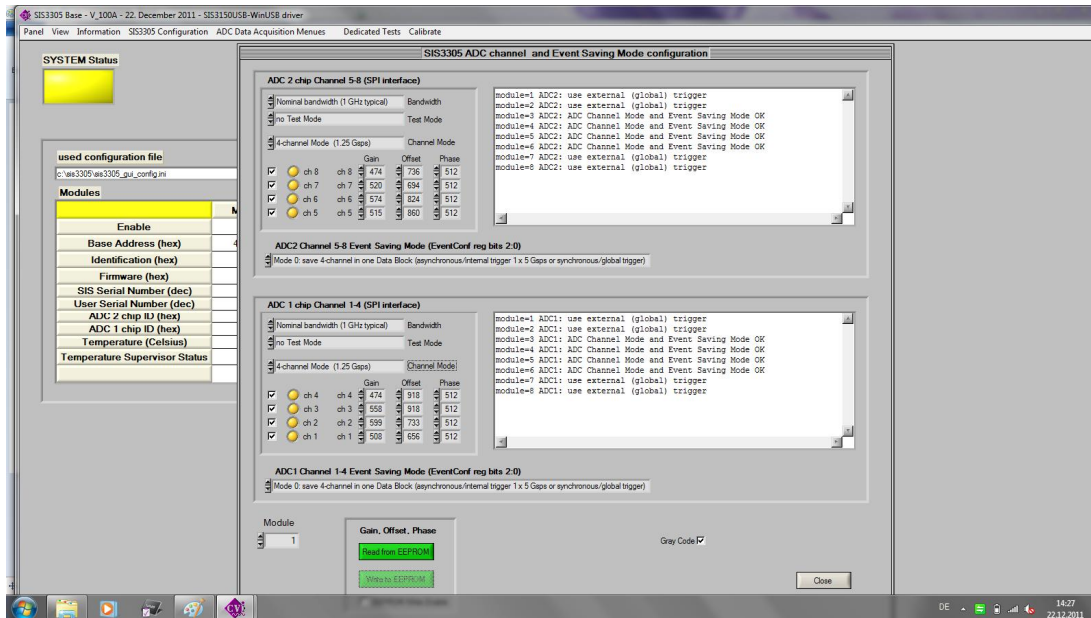
You will be prompted for a configuration file, use the sis3305_gui_config.ini



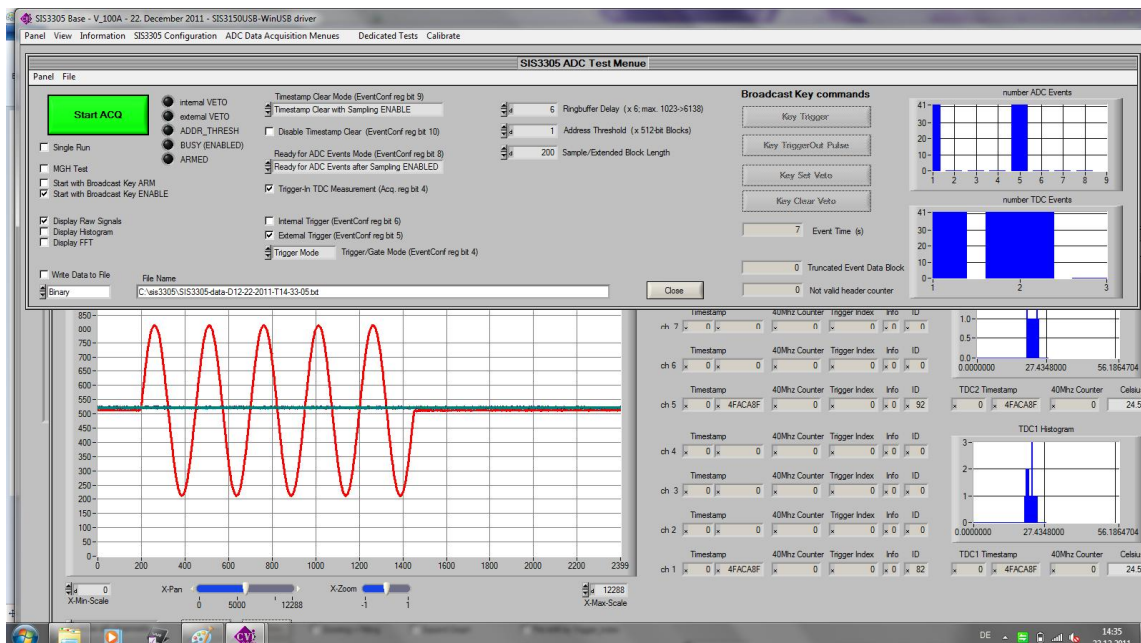
The startup screen should look like



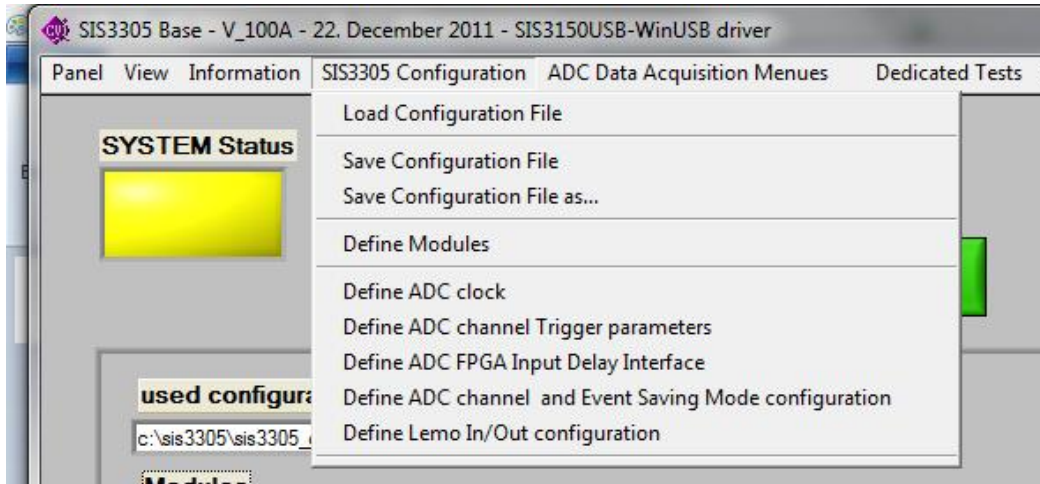
Use the SIS3305 Configuration menu submenu ADC channel and event saving mode configuration to set both ADC chips to 4-channel mode as shown below.



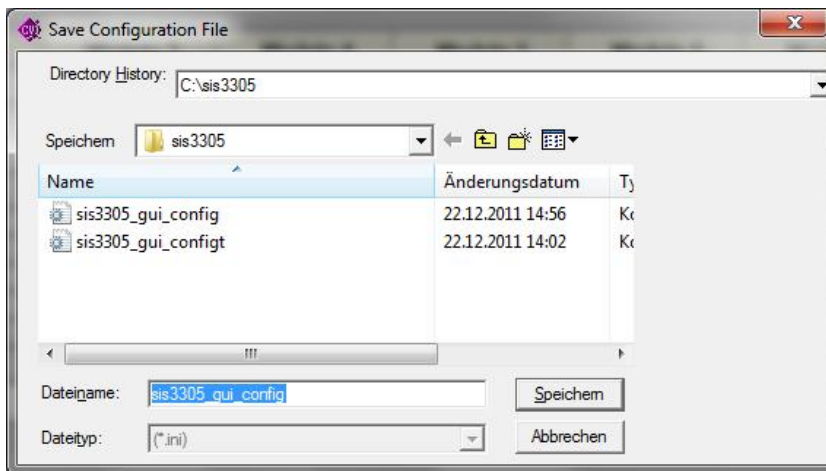
Go to the ADC test menu and select external trigger. The sample/extended block length parameter is used to define the number of acquired samples. Use the Start ACQ button to start the acquisition.



Save Configuration File or Save Configuration File as... from the SIS3305 Configuration menu can be used to store the current parameter set to file.



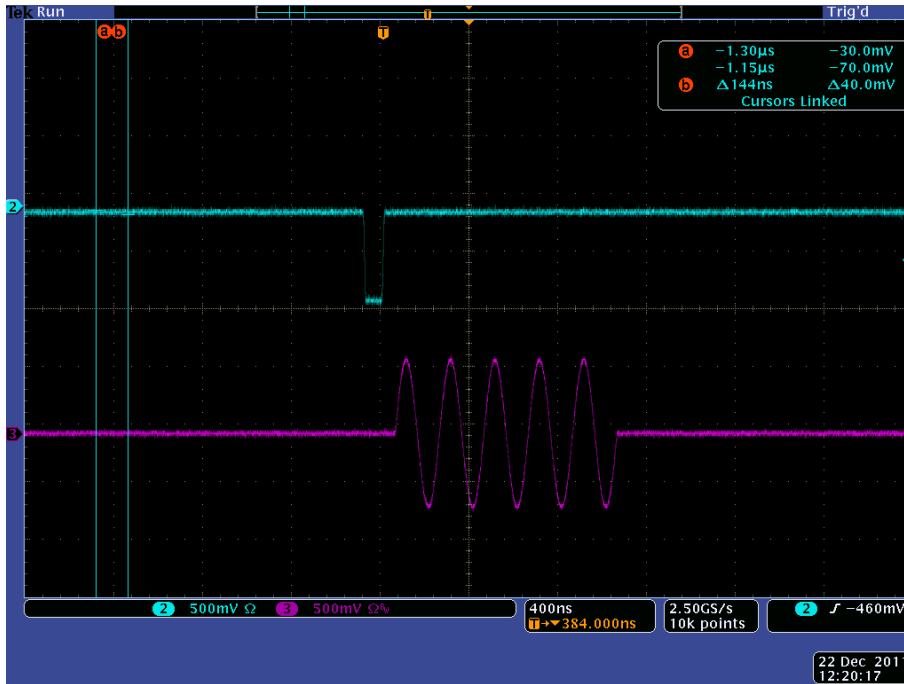
In the Save Configuration File as case the Save Configuration File window pops up



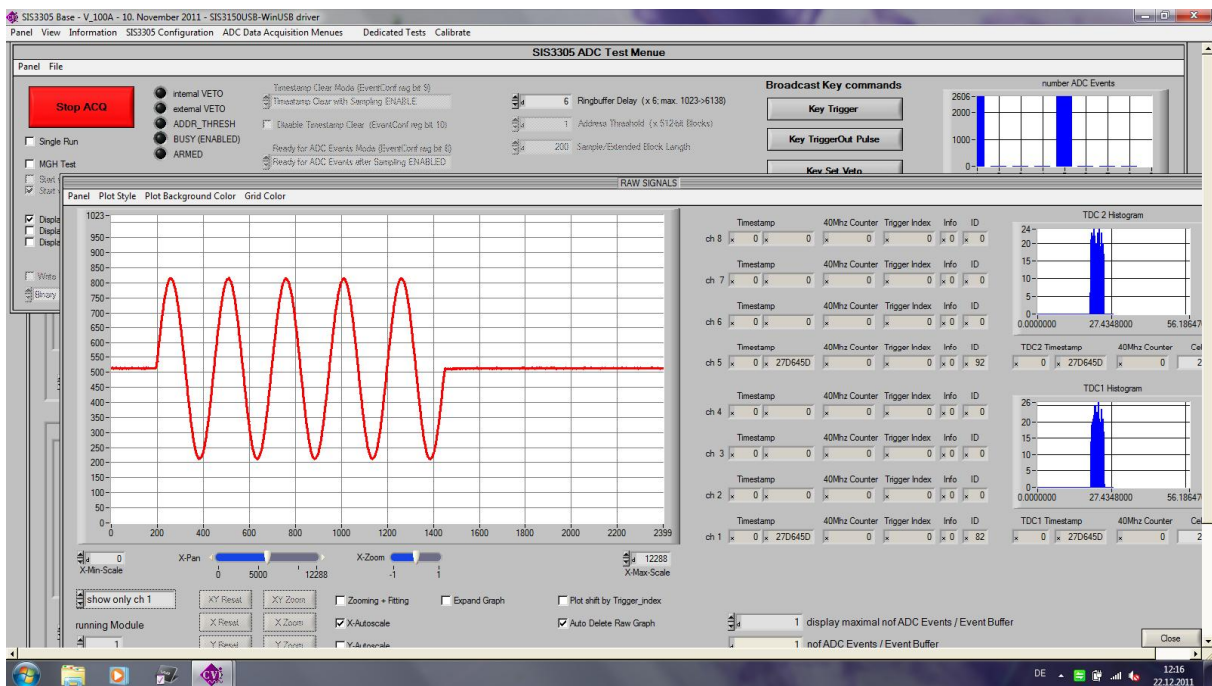
Cabling with external NIM level trigger signal and pulse generator on channel 1



Scope shot of NIM trigger signal (cyan) and signal (magenta) connected to channel 1 of SIS3305



And the resulting signal in the SIS3305 base program



Note: A high speed fan is required due to the fairly high power consumption of the e2v digitizer chip in the horizontal 4 slot VME enclosure. While the system is fairly loud in a lab environment this should not be an issue for the installation in the final system. The final larger vertical 21 Slot VME Crates will have to run at high fan speed also, but will be somewhat less noisy.